

# Zoll M Series SAED Battery Management Protocol PHC Remote

Follow this procedure weekly **and** following extended use of the ZOLL ....

1. Firstly, remove the Battery (A) which is currently in the monitor.
2. Take the spare battery (B) from the ZOLL pack and insert into monitor

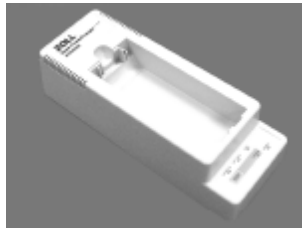
Keep the defibrillator  
on charge



**Rotation of Batteries**  
Where Battery 'A' is charged  
one week,  
Battery 'B' will be charged in  
the same way the next week...

Load battery (A) into  
the Power Base Charger  
& Press the 'Test' button

**Hint...**  
Mark each Battery  
as "A" or "B"  
to distinguish



Leave the battery to  
test and charge.  
This takes ~ 8 hours

Place fully charged  
Battery in the rear pocket  
of the ZOLL pack

Only when the 'Ready' light  
is illuminated  
remove battery 'A'

Write the date on the  
back of the battery  
when this charge & test  
procedure is completed